



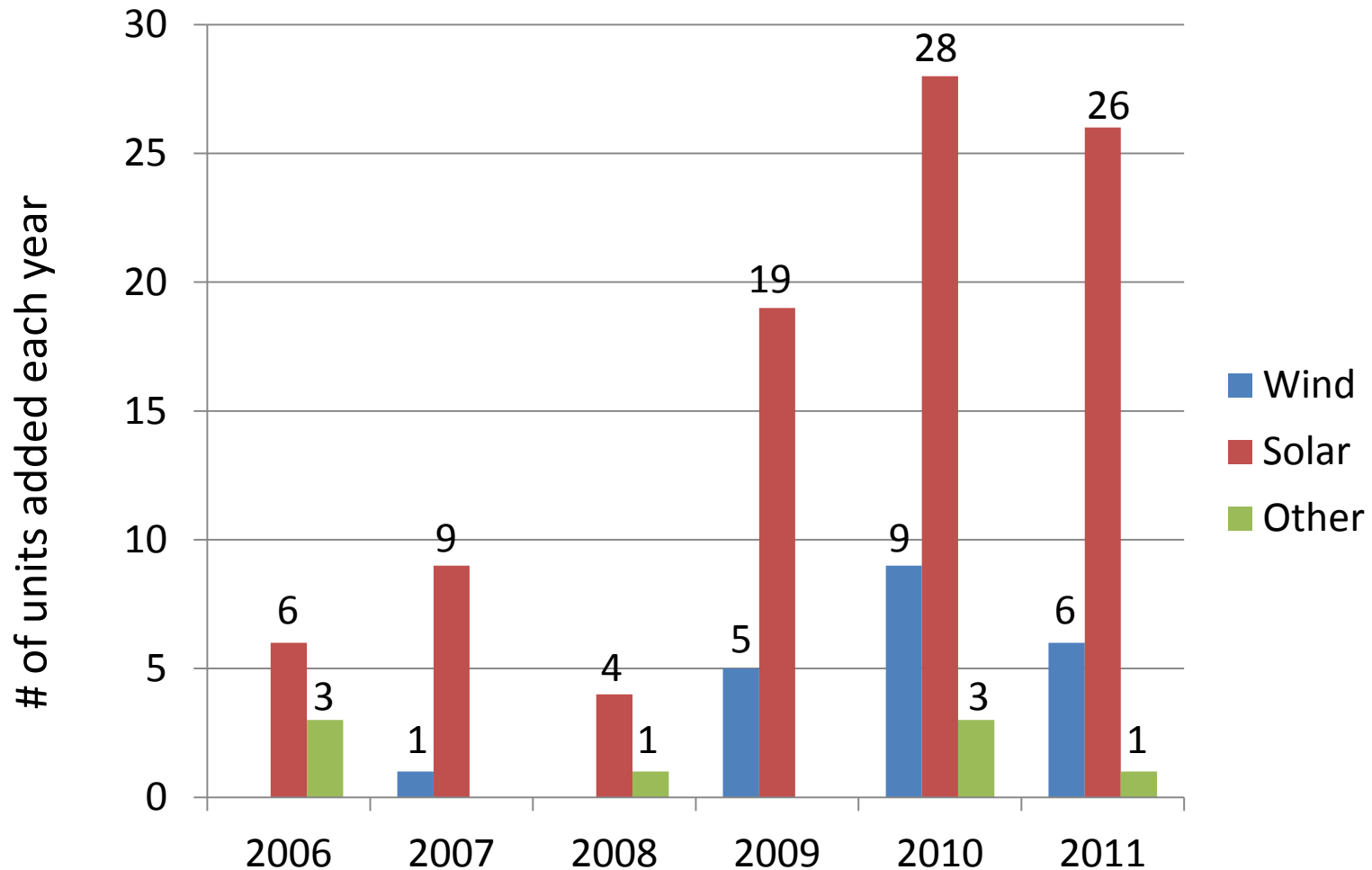
Hill Country Solar Tour



PEC Solar Trends

- Began formal interconnection policy in 2006
 - Sept. 1, 2011, PEC had 121 agreements
 - 92 of those units are solar, 7 units are solar/wind
- Oak Hill District has most interconnections -33 units
 - 27 in Marble Falls, 18 in Canyon Lake
 - Kyle/Buda and Cedar Park tied with 15 each
- Have had increased interest in 2011
 - Since January have had 33 agreements
 - 26 of those units are solar

Total PEC Interconnections

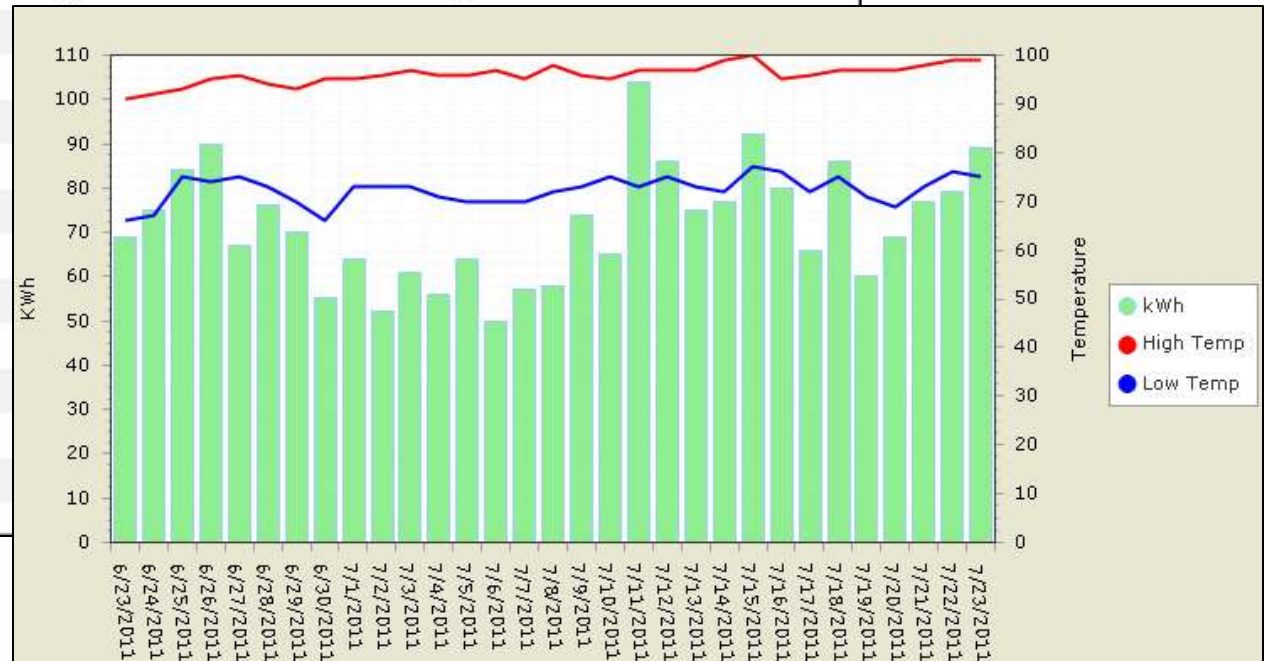


Get Started with PEC Resources

- Energy efficiency is key
 - Conservation section of www.pec.coop
 - DIY videos on PEC YouTube channel
 - Conservation blog/online member discussions
 - Online Home Energy Saver
 - Touchstone Energy Interactive Home Feature
 - Free energy audit
- Login and learn your baseline kwh with PEC's online MyUse Energy Analyzer

Sample MyUse Report

Date	Charge	kWh	Low Temperature	High Temperature
7/24/2011	\$9.01	85	76	100
7/25/2011	\$9.01	85	73	101
7/26/2011	\$10.37	99	77	100
7/27/2011	\$7.85	73	74	101
7/28/2011	\$9.69	92	76	99
7/29/2011	\$7.65	71		
7/30/2011	\$9.89	94		
7/31/2011	\$9.50	90		
8/1/2011	\$7.94	74		
8/2/2011	\$7.75	72		
8/3/2011	\$7.85	73		
8/4/2011	\$9.98	95		
8/5/2011	\$8.62	81		
8/6/2011	\$7.94	74		
8/7/2011	\$7.85	73		
8/8/2011	\$10.28	98		



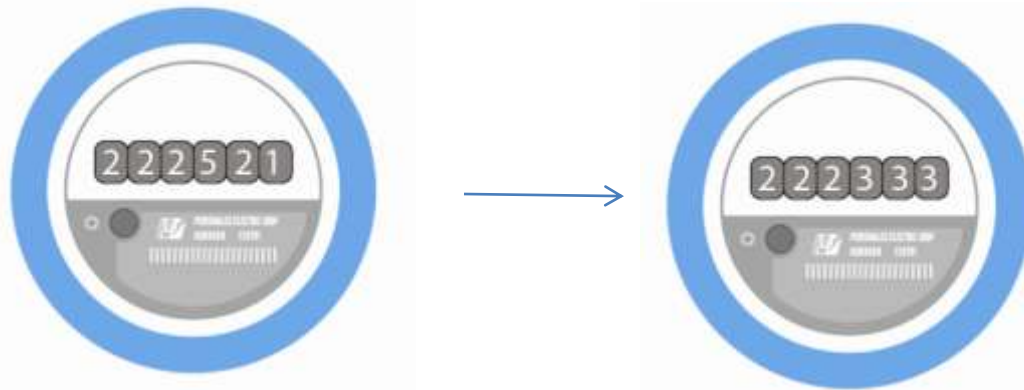
PEC Interconnection Process

- If less than 20 KW, visit www.pec.coop/solar for forms or make an appointment with Planning Section
- Read the policy and return the Interconnection Agreement 60 days before you start installation
- Call your local office when you begin installation
- Call us again when the installation is completed so we can verify switch disconnect operates properly
 - Both sources of power can be de-energized for safety
- We will update our records, and you are ready!

No Need for a New Meter

- Interconnected service uses net metering, which routes power through a single meter that measures the PEC-delivered electricity you receive and subtracts the amount of electricity exported by your equipment.
- Every meter PEC installs on its system is a net meter
- No additional cost to member
- Read meters remotely via electric lines daily between midnight and 4 a.m.

Interconnected Members' Meters



No Need for a New Bill

- If you produce more than you consume, you will automatically receive a credit on your bill
 - Will still have a \$22.50 service availability charge for residential members
 - PEC charges full retail rate for electricity used, but also charges full retail rate for power you generate
 - At the end of month, take final reading and “true up”
 - If you have used more than you produced, will have a kwh charge
 - If you produced more than you used, will receive a credit at PEC’s avoided cost

Avoided Cost Defined

- Avoided cost is defined as the fuel cost only; no capacity component
- Also defined as the expense PEC avoids by not purchasing kwh from its power suppliers
- May change monthly
- Is the average rate PEC pays other generators; PEC rates change throughout the day
- Avoided cost is \$0.03337/kwh for bills rendered on or after Oct. 1.

PEC Oak Hill Office Facts

- Stop by anytime to look at our 3.6 KW array
- Installed in 2007 by Tesla Electric
- Has an annual rolling production average of about 4,400 kwh
- Offsets 2% of the office consumption yearly
- Value of the electricity produced in last 12 months is \$528 (calculated at the retail rate)

**Visit pec.coop/solar
for resources and updates!**

