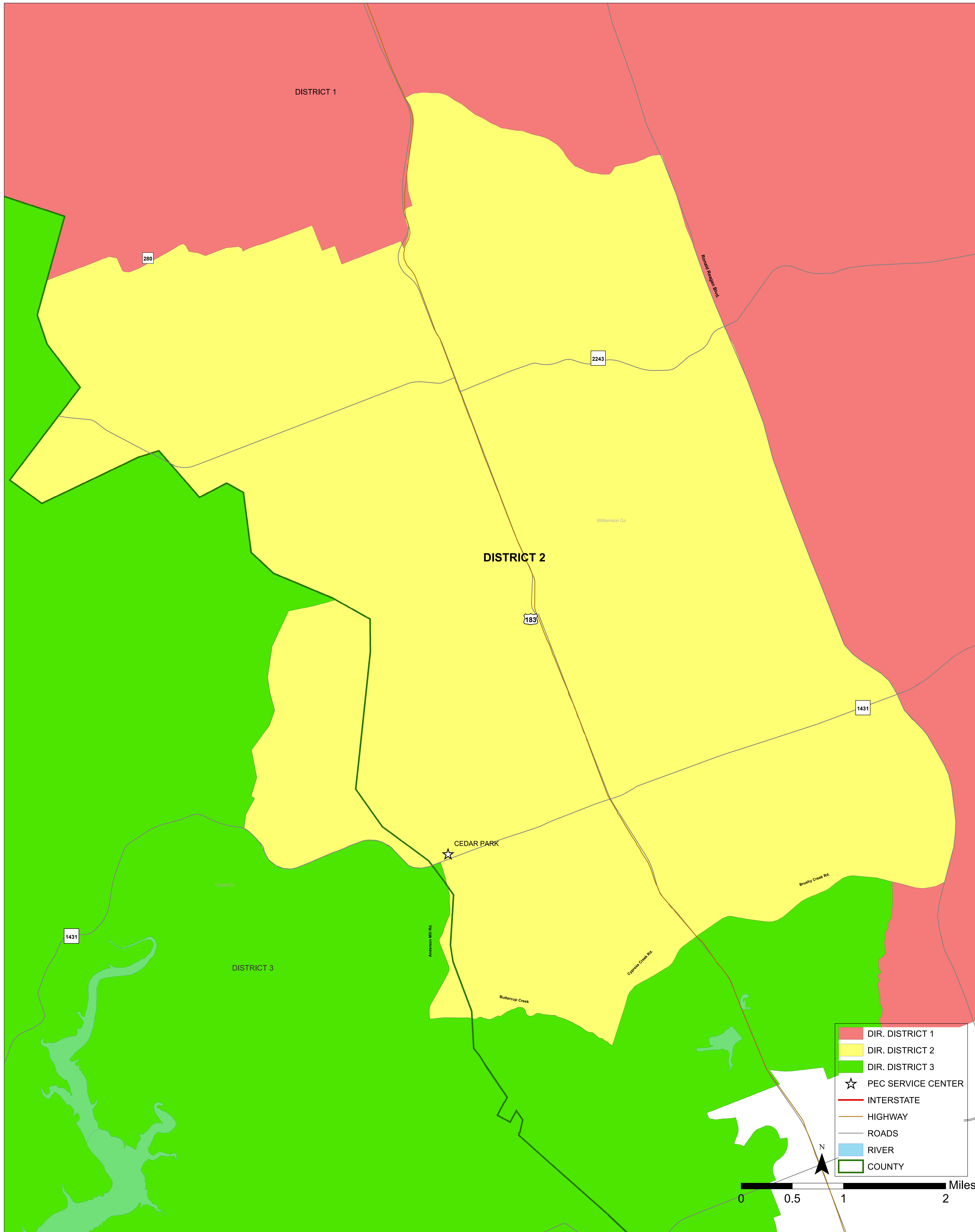


**Director District 2 Boundary**  
**Board Approved and Adopted 10/18/19**  
(Certain areas within the boundaries shown do not receive PEC electric service)



- DIR. DISTRICT 1
- DIR. DISTRICT 2
- DIR. DISTRICT 3
- PEC SERVICE CENTER
- INTERSTATE
- HIGHWAY
- ROADS
- RIVER
- COUNTY

0 0.5 1 2 Miles